

MMI Newsletter

The Official Quarterly Newsletter of Motion Metrics International Corp.

Issue 1
October 2009

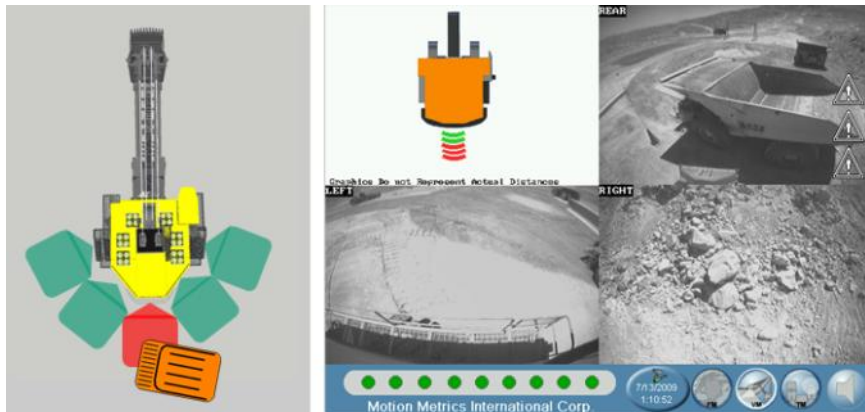


Inside this issue:

- Featured Product 1
- Come and See our New Website 2
- ToothMetrics™ Cost/Benefit Analysis! 2
- Product Updates 3
- Contact Motion Metrics 4

FEATURED PRODUCT

ViewMetrics™-Radar adds several radar sensors around the equipment to provide the operator with an active feedback about the dangerously close obstacles around the shovel. ViewMetrics™-Radar automatically and seamlessly associates the radar detections with the appropriate camera views, all in an interface designed to minimize operator distraction.



Obstacle enters detection zone

Operator is notified visually

Taking the ViewMetrics™ concept to a new level, ViewMetrics™-Radar provides an extra measure of safety with its ability to detect objects even in environments with poor visibility (e.g. dust, fog, low lighting). Visual and audio alarms are used to notify the shovel operator of any nearby objects to prevent collisions. The proximity of the nearest object is graphically shown on the respective ViewMetrics™ camera view.

COME AND SEE OUR NEW WEBSITE

We have launched a whole new website!

To serve you better we are sharing valuable information in our website regarding products highlights, specifications, case studies, and much more. Moreover, we are ready to provide quick support through our online support forms.

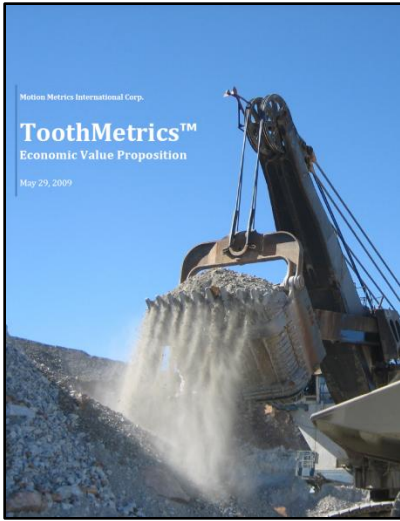
Have a look at:

www.motionmetrics.com



TOOTHMETRICS™ COST/BENEFIT ANALYSIS!

ToothMetrics™ is Motion Metrics' flagship product that has been developed over the last ten years by MMI. It is a rugged embedded machine vision system that monitors the condition of mining shovel dipper 24/7 and informs the machine operator of a possible tooth breakage incident in real time.



Our analysis based on a conservative typical scenario taken from actual reported numbers by customers, reveals that investment in ToothMetrics™ system will pay back the original amount in about 2 months. Moreover, ToothMetrics™ on average brings back more than 10 times its investment dollars amount every year.

Contact us for further information on ToothMetrics™ Cost-Benefit analysis.

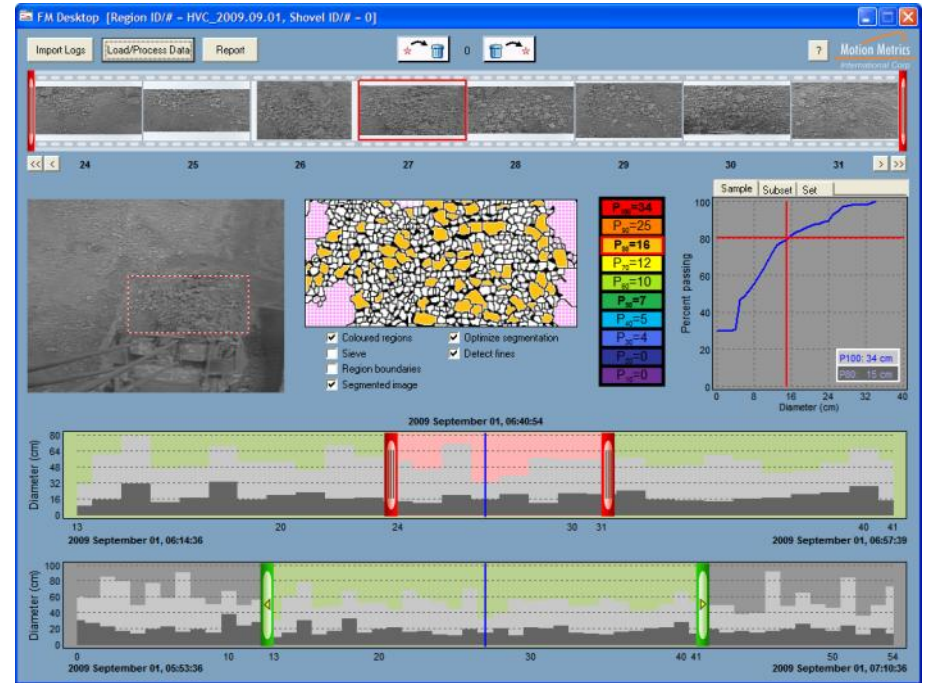
PRODUCT UPDATES

FragMetrics™ 2010

We have re-engineered our rock fragmentation analysis system. The all new FragMetrics™ 2010 system is comprised of two main components:

1. **FM-Logger:** An autonomous in-shovel bucket image capturing system
2. **FM-Desktop:** An office software for fragmentation analysis and visualization of results

FM-Logger resides on embedded system in the shovel and automatically acquires full bucket images. FM-Desktop, which installs on a normal office computer, selects the best bucket images and uses a cutting-edge fragmentation algorithm to delineate the rocks with minimal manual manipulation. FM-Desktop also provides the user the ability to browse the pass-through percentile results and to modify the collection of full bucket images for further improvements in accuracy.



FM-Desktop

ToothMetrics™

A software update for ToothMetrics™ is available with improvements in decision making and overall performance. Our customers are entitled to a 1-year free software update. Inquire about this today!

CONTACT MOTION METRICS

Phone:

Head Office: +1 604 822 5840,
+1 604 822 5842
Tech Support: +1 604 822 5848
Fax: +1 604 677 5191

Email:

General: info@motionmetrics.com
Sales: sales@motionmetrics.com
Support: support@motionmetrics.com

Web:

www.motionmetrics.com

